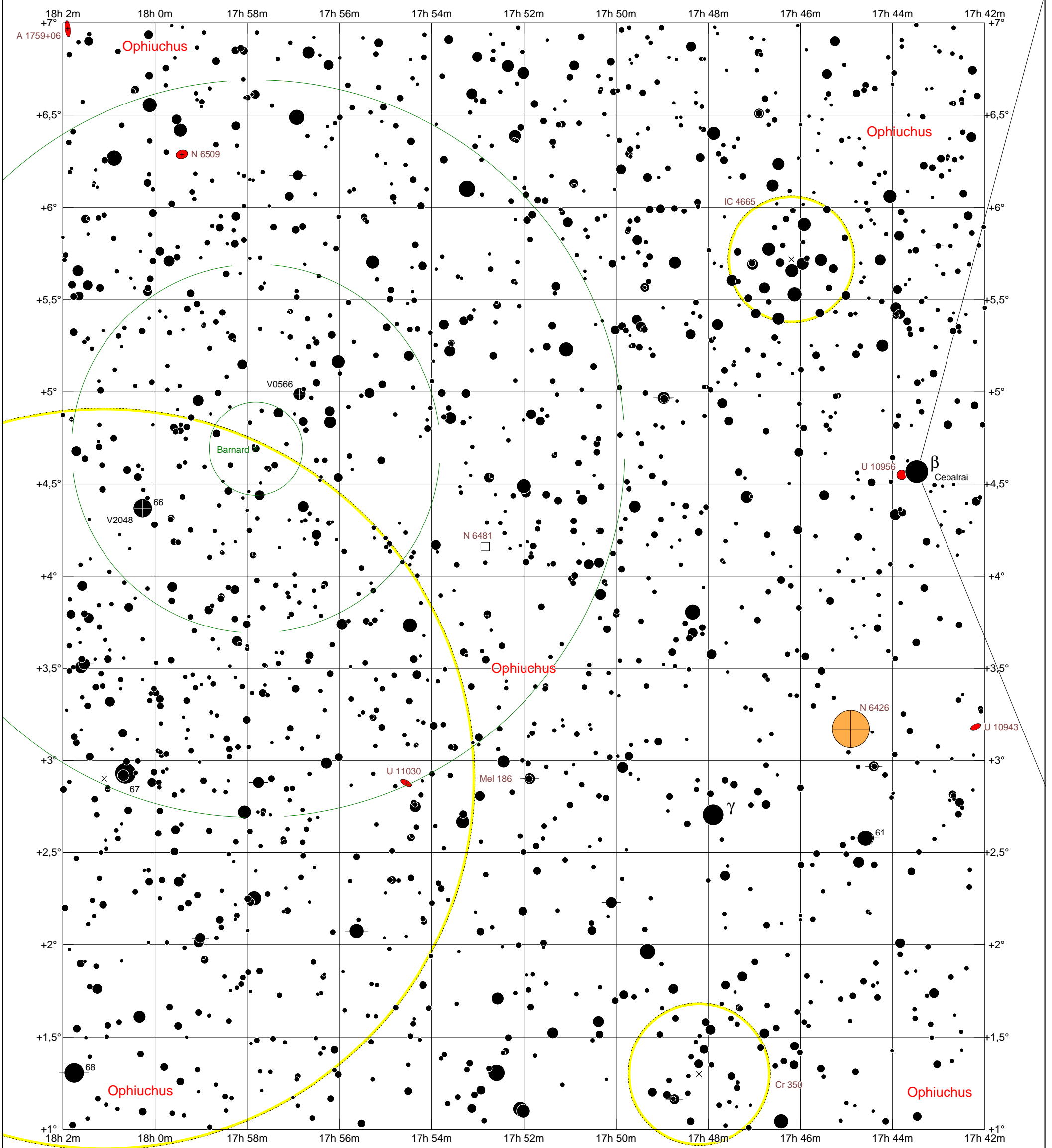


Époque 2000,0

# Etoile de Barnard

Zoom = 8 X



COELIX

www.ngc7000.com

## Magnitudes stellaires



Écliptique

240°

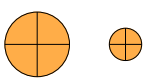
Équateur galactique

324°

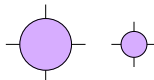
Amas stellaires ouverts



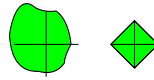
Amas globulaires



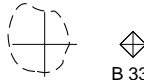
Nébuleuses planétaires



Nébuleuses diffuses



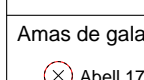
Nébuleuses obscures



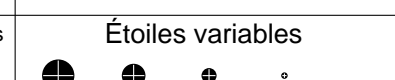
Galaxies



Quasars



Étoiles doubles ou multiples



Amas de galaxies



Étoiles variables

